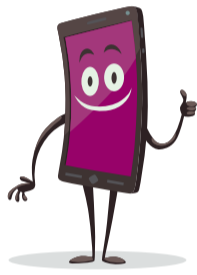




# Lithium batteries

## Tips for proper use



Handle with care  
Avoid damage

### take care!



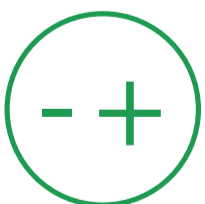
Use the right charger



Keep an eye on it



Recycle used batteries



Tape over battery terminals when storing and recycling

### beware!



Avoid high temperatures



Do not charge near flammable materials



Be careful if devices get hot



Don't throw it in the bin

[www.elektro-ade.at](http://www.elektro-ade.at)